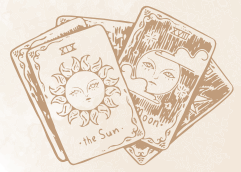


# Eight of Swords

*Imprisonment, captivity, victimization*

MINOR ARCANA



Classical element:



AIR



FIRE



EARTH



WATER

Zodiac sign/planet:

Numerology:

## YOUR FIRST IMPRESSION OF THE CARD

☐ Positive ☐ Negative ☐ Neutral

## EIGHT OF SWORDS' REFLECTION

*What situations make you feel trapped or powerless?  
How can a shift in perspective help you regain control?*

Symbols:

## UPRIGHT MEANING

## REVERSED MEANING

## ♥ LOVE/RELATIONSHIPS

## 📁 CAREER/MONEY

## 🌱 PERSONAL GROWTH

Notes

