



QUEEN OF SWORDS

M I N O R A R C A N A

Butterfly Crown:
Transformation



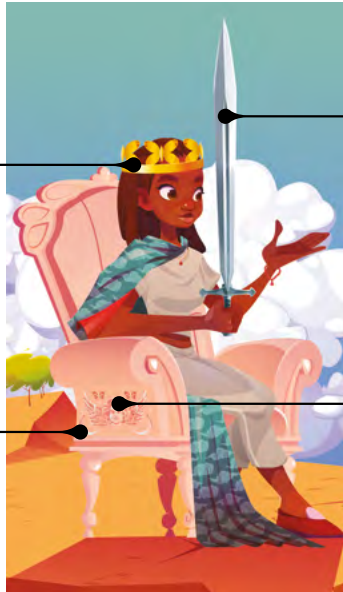
Sword:
Truth



Sickles:
Matriarchy,
Harvest



Cherub:
Innocence



Yes/No Reading:



Yes



No



Maybe

Names in Other Tarot Systems:

Golden Dawn: Queen of Swords

Tarot of Marseilles: Dame of Swords

Thoth: Queen of Swords

			4, 13	4
PLANET	ZODIAC Gemini, Libra, Aquarius	ELEMENT Air	NUMEROLOGY	COUNT

Upright: *Perceptive, Morals, Eccentric, Discernment, Complexity, Sharp Wit*

The upright Queen of Swords embodies the essence of intellectual clarity, sharp intuition, and unwavering honesty. They are a figure who, through experiences, has learned the value of clear boundaries and direct communication. Their wisdom comes from knowledge and their lived experiences, often marked by hardships and challenges. These trials have honed their judgment and allowed them to discern truth from falsehood easily. They are not swayed by emotional manipulation, preferring to see situations clearly and discerningly.

In conversations, they are straightforward and value transparency. While they may sometimes be perceived as detached or cold, it's their way of ensuring objectivity. The Queen of Swords encourages individuals to seek clarity in their thoughts and approach situations rationally. Drawing this card might be a sign that one needs to cut through illusions, see things as they are, and communicate their truth without hesitation. It's a reminder that sometimes, embracing the energy of the Queen of Swords can lead to the most authentic and clear outcomes.

Reversed: *Cold-Hearted, Vindictive, Cruel, Bitter, Resentful, Mental Fog*

When the Queen of Swords appears reversed, they symbolize a person who may be allowing their intellect and analytical abilities to cloud their judgment, leading to decisions made from a place of bitterness or cynicism. They could represent someone who has let past traumas or betrayals influence their present interactions, causing them to be overly critical, sharp-tongued, or unnecessarily harsh in their judgments. Their keen insight becomes a potential pitfall as they may use it to dissect and criticize without offering constructive feedback.

The reversed Queen of Swords can also indicate someone struggling to set clear boundaries or unable to communicate their thoughts and feelings effectively. They are reminded of the importance of regaining their clarity and purpose.

Upright Interpretations

General Reading: The Queen of Swords embodies clarity, independence, and intellect. They possess keen perception and is often known for their sharp wit and ability to communicate ideas effectively. They represent someone who values truth and is direct in their dealings.

Love Reading: In the realm of love, the Queen of Swords speaks to straightforward communication. This may indicate a relationship where both parties value transparency. For singles, it suggests they know what they want and are clear about their boundaries.

Health Reading: The Queen of Swords advises using intellect and clear thinking when approaching health issues. It may also suggest seeking expert opinions or doing thorough research.

Career Reading: In a career context, the Queen of Swords indicates clear communication, decisiveness, and strategic planning. It suggests taking a logical approach to career decisions.

Reversed Interpretations

General Reading: In the reversed position, the Queen of Swords can indicate a person who is overly critical, emotionally detached, or someone who uses their intellect to manipulate or harm.

Love Reading: This card can suggest coldness, barriers in communication, or a feeling of emotional distance in a relationship. It might also indicate past wounds affecting the present.

Health Reading: Potential neglect of mental health, not listening to professional advice, or overthinking health issues to the point of anxiety.

Career Reading: It could signify workplace conflicts, miscommunication, or being overly critical or detached from colleagues.

The Queen of Swords card depicts a regal figure seated on a throne, with a clear sky behind them. They hold a sword upright in one hand, symbolizing their clarity of thought and intellectual prowess. Their other hand often gestures as if they are ready to communicate or deliver a message. The clouds at the base of the card signify the challenges and emotional turmoil they have surmounted, and the birds in the sky can represent their high-flying thoughts and ability to see the bigger picture. The crown they wear, often adorned with butterflies, speaks to their transformation and growth through life's adversities.

They embody intellectual independence, clear communication, and insightful judgment. As a master of objectivity and analysis, the Queen of Swords represents someone who can cut through confusion and see the truth of a situation. They value honesty and directness, often coming off as forthright or even blunt. Yet, their intentions are pure, driven by a desire to understand and be understood. They are not easily swayed by emotion, making decisions based on logic and understanding, and they expect the same clarity and straightforwardness from others.



ZODIAC: Gemini (May 21 – June 20) is an Air sign ruled by Mercury. The dual nature of Gemini embodies a mix of yin and yang, and Geminis often feel as though they have two distinct sides.



Libra (September 23 – October 22) is an Air sign ruled by Venus. Libras often strive for harmony and balance in their lives.



Aquarius (January 20 – February 18) is an Air sign ruled by Uranus. Aquarians are self-reliant, analytical, independent, clever, and optimistic.



ELEMENT: Air represents logic, intellect, and communication. The intangible element is considered to be active, masculine energy. It is associated with Spring, the Suit of Wands, and the East cardinal direction.



HERMETIC QABALAH Associated Hebrew Letter: Waw – Hook, Nail (Connections, Secure)



QABALISTIC SEPHIROT: Binah (Understanding)



TIMING: September 12 – October 12