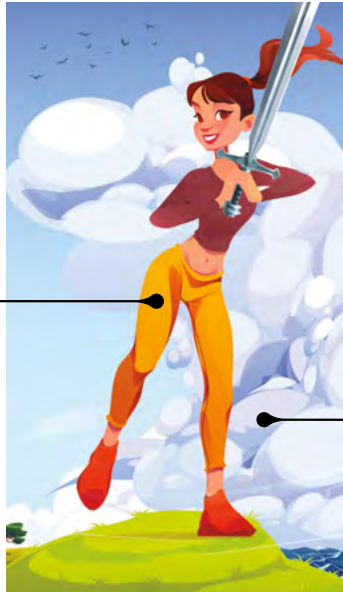




PAGE OF SWORDS

M I N O R A R C A N A

Pose:
Agile



Wind:
Power



Yes/No Reading:



Yes



No



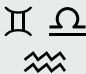

Maybe

Names in Other Tarot Systems:

Golden Dawn: Princess of Swords

Tarot of Marseilles: Valet of Swords

Thoth: Princess of Swords

			2, 11	7
PLANET	ZODIAC	ELEMENT	NUMEROLOGY	COUNT
	Gemini, Libra, Aquarius	Air		

Upright: Curiosity, Mental Energy, Innovation, Thirst for Knowledge, Caution
The upright Page of Swords embodies the spirit of inquiry. It represents an eager mind seeking truth and clarity to understand the world. This quest for knowledge is driven by pure intent and an insatiable curiosity.

The Page of Swords can also act as a harbinger, bringing messages about challenges, conflicts, or the need to stand one’s ground. While the news might be unexpected, it comes as a call to prepare, arm oneself with information, and face the challenge head-on. The card radiates youthful energy, symbolizing someone not afraid to ask questions, challenge the status quo, or bring a fresh perspective to old problems. It encourages tapping into one’s youthful energy, being bold, and approaching situations with a keen and analytical mind.

Reversed: Manipulation, Stupidity, Paranoia, Haste, Haphazard Action
The Page of Swords is depicted as a youthful figure standing tall with a sword held upright, symbolizing their thirst for knowledge and curiosity about the world. They represent the early stages of intellectual exploration, where the energy is fresh, and the desire to learn and communicate is intense. The windswept landscape often present in this card’s imagery reflects the turbulent waters of the young mind, eager to challenge, question, and understand. They are analytical, constantly questioning the status quo, and have a keen sense of justice. Their sharp intellect and nimble mind allow them to see through deceptions, making them excellent problem solvers.

However, like many in the initial stages of a journey, the Page of Swords may sometimes speak or act without fully considering the implications, leading to potential misunderstandings or conflicts. Their eagerness can lead them to be hasty or impulsive. Despite this, their intentions are pure. They bring forth a message of using one’s intellect and communication skills to navigate challenges, and their appearance often suggests that a new phase of learning or a fresh perspective is on the horizon.

Upright Interpretations

General Reading: The Page of Swords represents a thirst for knowledge, a curious mind, and a quest for truth. It may also symbolize a message, often related to challenges or conflicts, or a person who's analytical and perhaps a bit impulsive.

Love Reading: In a love context, this card might suggest open communication about feelings or concerns. It could also indicate a curious or analytical partner who seeks clarity in the relationship.

Health Reading: The Page of Swords may hint at the need to gather more information about a health issue or to approach health with curiosity and openness. It's a prompt to ask questions and seek understanding.

Career Reading: In career, the Page of Swords can indicate a new project that requires keen research and sharp intellect. It can also signify constructive criticism or the need to communicate more effectively at work.

Reversed Interpretations

General Reading: In its reversed position, the Page of Swords can indicate gossip, deceit, or a lack of direction. It suggests hasty decisions or speaking without thinking and can represent someone who is scatterbrained or not trustworthy.

Love Reading: This could point to misunderstandings, dishonesty, or communication barriers in a relationship. It might also suggest that someone isn't being entirely open or truthful.

Health Reading: There might be misdiagnosis, misinformation, or denial regarding a health issue. It's crucial to be cautious about getting swayed by unreliable health advice.

Career Reading: This suggests potential misunderstandings at work, gossip, or being underprepared for a task or project. It's a warning against rushing into things without adequate preparation.

The background features clouds and birds, suggesting the element of air which is associated with the suit of Swords. This represents thoughts, communication, and the intellectual realm.

The Page holds a sword upright, symbolizing a readiness to face challenges and a desire for truth. The way the sword is held, often with both ease and confidence, shows the Page's dedication to clarity and justice. They're standing on higher ground or a hill, indicating a position of observation and perspective. This reinforces the idea of seeking clarity, overviewing situations, and the quest for knowledge.

The youthful appearance of the Page represents the early stages of intellectual and communicative development. It indicates freshness, new ideas, and the beginning phase of a journey towards mastering the realm of thought and communication.



ZODIAC: Gemini (May 21 – June 20) is an Air sign ruled by Mercury. The dual nature of Gemini embodies a mix of yin and yang, and Geminis often feel as though they have two distinct sides.



Libra (September 23 – October 22) is an Air sign ruled by Venus. Libras often strive for harmony and balance in their lives.



Aquarius (January 20 – February 18) is an Air sign ruled by Uranus. Aquarians are self-reliant, analytical, independent, clever, and optimistic.



ELEMENT: Air represents logic, intellect, and communication. The intangible element is considered to be active, masculine energy. It is associated with Spring, the Suit of Wands, and the East cardinal direction.



HERMETIC QABALAH Associated Hebrew Letter: Waw – Hook, Nail (Connections, Secure)



QABALISTIC SEPHIROT: Malkuth (Kingdom)



TIMING: December 21 – March 20