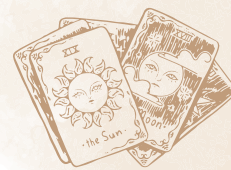
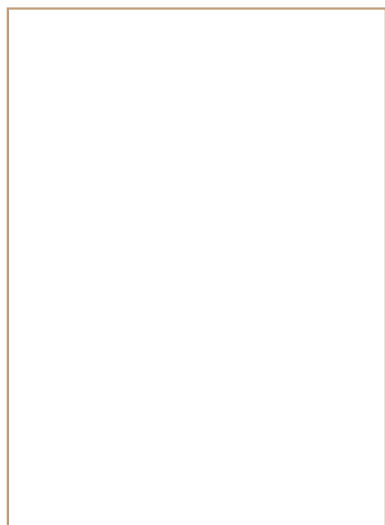


# Queen of Pentacles

COURT CARD



*Practicality, homely comfort, nurturing provider, motherly care*



*Queens' classical element:*



AIR



FIRE



EARTH



WATER

*Pentacles' classical element:*



AIR



FIRE



EARTH



WATER

*Zodiac sign/planet:*

## YOUR FIRST IMPRESSION OF THE CARD

☐ Positive ☐ Negative ☐ Neutral

QUEENS

### FEELINGS

*Caring, calm*

### POLARITY

*Passive*

### ACTIONS

*Embodies, nurtures, understands*

### AGE

*Mature*

PENTACLES

### MEANING

*Nature, resources, health, possessions, finances, physical world, stability*

### POLARITY

*Passive*

### SEASON

*Winter*

## UPRIGHT MEANING

## ♥ AS A LOVER/PARTNER/FRIEND

## 👜 AT THEIR JOB

## 🌿 AS A SPIRITUAL PERSON

## REVERSED MEANING

*Notes*