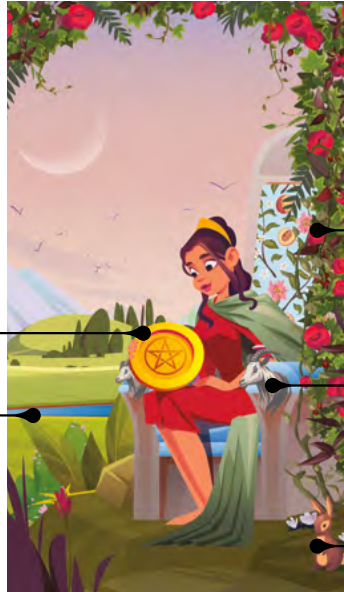




QUEEN OF PENTACLES

M I N O R A R C A N A



Pentacle:
Material Wealth

Water:
Emotions,
Intuition

Plants: Growth,
Nurturing

Goats:
Grounding,
Capricorn

Rabbit:
Fertility,
Reproduction

Yes/No Reading:



Yes



No



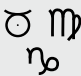

Maybe

Names in Other Tarot Systems:

Golden Dawn: Queen of Pentacles

Tarot of Marseilles: Dame of Coins

Thoth: Queen of Pentacles

			4, 13	4
PLANET	ZODIAC Taurus, Virgo, Capricorn	ELEMENT Earth	NUMEROLOGY	COUNT

Upright: Creature Comforts, Practical, Generous, Nurturing, Success, Security

When the Queen of Pentacles appears upright during a reading, they symbolize warmth, abundance, and nurturing. Their presence indicates a time of stability, prosperity, and an acute understanding of the tangible world. In addition to their successful nature, they exude the essence of a nurturing mother figure or a wise confidante, making them a generous and deeply rooted individual who utilizes their resources to support their loved ones and create a harmonious environment. With their innate ability to make any space feel like home and combine practicality with intuition, the Queen of Pentacles is a valuable adviser for domestic projects or gardening.

Beyond their maternal characteristics, this card is a beacon of financial stability and good health, especially when your inquiries are career or finance-oriented. The Queen of Pentacles’ grounded nature also serves as a reminder to stay connected to the physical world, appreciate the beauty of everyday life, and remain present to find joy in the present moment while still chasing your aspirations.

Reversed: Jealousy, Financial Independence, Self Care, Selfish, Intolerant

The reversed Queen of Pentacles may indicate feeling overwhelmed or consumed by daily responsibilities, leading to neglect in other crucial aspects of life such as relationships, self-care, or spiritual well-being. This Queen can also represent a person who has become overly fixated on wealth and status in their quest for material success, causing damage to their emotional and spiritual health. Alternatively, they can represent someone who is usually reliable and grounded but is presently experiencing a phase of unreliability or inconsistency due to external stressors or internal turmoil.

From a financial perspective, the reversed Queen of Pentacles warns against poor financial choices or resource mismanagement. One should reassess their financial situation and be careful of overindulgence, being out of touch with one’s budget, or neglecting essential financial obligations.

Upright Interpretations

General Reading: You are making your environment comfortable and welcoming. This could also be a period of prosperity and well-being.

Love Reading: If single, you may be in a place where you're learning to nurture and love yourself, setting the groundwork for a solid relationship in the future. For those in relationships, this card indicates a stable, nurturing phase where both partners support and take care of each other, fostering a sense of security.

Health Reading: Your physical well-being is at the forefront, and you might be focusing on taking care of your body through proper nutrition and exercise. It's also a time of mental and emotional balance, with a harmonious connection between body and mind.

Career Reading: The Queen of Pentacles signifies prosperity and stability in career matters. This could also suggest a mentor figure in your professional life who embodies the nurturing and grounded qualities of this card. Your dedication and practical approach at work are being recognized.

Reversed Interpretations

General Reading: The reversed Queen of Pentacles suggests that you might be feeling out of touch with your surroundings or overwhelmed by daily responsibilities. There's a possibility of neglecting essential areas of life due to an imbalance in focus.

Love Reading: Singles may feel they're neglecting their own needs or not ready for a committed relationship. Those in relationships might be experiencing a phase where one partner feels taken for granted, or there's a lack of nurturing and stability.

Health Reading: You may be neglecting your health or well-being. Overindulgence, ignoring warning signs, or putting off medical appointments are possibilities. It's crucial to find balance and prioritize self-care.

Career Reading: This card reversed can signal challenges in the workplace. You may feel overlooked or not valued for your contributions. Alternatively, it could indicate poor financial decisions or a period of financial instability. It's a call to reassess and make necessary changes.

The Queen of Pentacles embodies nurturing energy, practicality, material comfort, and a strong intuitive connection with nature and the Earth. This connection is evident in the cherubs, goats, and other symbols that adorn their throne, representing the deep connection with nature and fertility. Their attire is usually opulent, further indicating material success and the comforts of the physical world. Yet, their modesty speaks to their grounded nature.

Surrounded by lush gardens and forests, their environment is one of abundance and prosperity, further emphasizing their connection to nature and the Earth. As a symbol of the earth element and material wealth, they cradle a pentacle close to their chest, signifying their ability to manifest material success while caring for their possessions.

The rabbit symbolizes fertility, reproduction, and manifesting abundance, hopping in the background. A stream or river flowing through the card portrays the undercurrent of emotions and intuition that guide them despite their primarily practical nature. The flowers further symbolize growth, nature, and the cyclical nature of life, emphasizing their role as a caretaker of the Earth.



ZODIAC: Taurus (April 20 – May 20) is an Earth sign ruled by Venus. This sign embodies those that are grounded, practical, and stable.



Virgo (August 23 – September 22) is an Earth sign ruled by Mercury. Virgos are selfless and dedicated, often putting others' needs above their own.



Capricorn (December 22 – January 19) is an Earth sign ruled by Saturn. Capricorns are known for their grounded, pragmatic approach, and are often focused on tangible outcomes.



ELEMENT: Earth represents death and rebirth. It is the realm of abundance, prosperity, and wealth. It is associated with Autumn, the Suit of Pentacles, and the North cardinal direction.



HERMETIC QABALAH Associated Hebrew Letter: Heh – Window (Vision, Reasoning)



QABALISTIC SEPHIROT: Binah (Understanding)



TIMING: December 13 – January 9