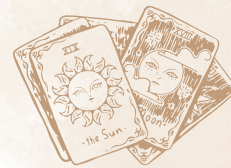


# Page of Cups

COURT CARD



*Intuitive messages, emotional opportunities, creativity,*

*Pages' classical element:*



AIR



FIRE



EARTH



WATER

*Cups' classical element:*



AIR



FIRE



EARTH



WATER

*Zodiac sign/planet:*

## YOUR FIRST IMPRESSION OF THE CARD

☐ Positive ☐ Negative ☐ Neutral

PAGES

### FEELINGS

*Eager, curious, yearning*

### POLARITY

*Passive*

### ACTIONS

*Explores, studies, appreciates*

### AGE

*Immature*

CUPS

### MEANING

*Emotions, love, relationships,  
intuition, compassion*

### POLARITY

*Passive*

### SEASON

*Autumn*

## UPRIGHT MEANING

## ♥ AS A LOVER/PARTNER/FRIEND

## 👛 AT THEIR JOB

## REVERSED MEANING

## 🌿 AS A SPIRITUAL PERSON

*Notes*