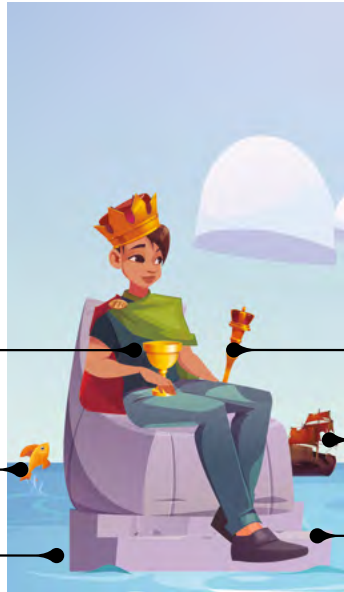




KING OF CUPS

M I N O R A R C A N A



Cup:
Humility



Jumping Fish:
Creativity, Ideas



Water:
Subconscious



Scepter:
Authority



Ship: Quest for
Enlightenment



**Floating
Throne:**
Levity, Virtue



Yes/No Reading:



Yes



No



Maybe

Names in Other Tarot Systems:

Golden Dawn: King of Cups

Tarot of Marseilles: Roi of Cups

Thoth: Knight of Cups

			5, 14	4
PLANET	ZODIAC	ELEMENT	NUMEROLOGY	COUNT
	Pisces, Scorpio, Cancer	Water		

Upright: Wisdom, Dedication, Understanding, Focus, Balance, Peacefulness

The King of Cups embodies the highest emotional intelligence, wisdom, and maturity level. When upright, this card signifies a deep understanding of one's emotions and the emotions of others, which suggests a nurturing and empathetic personality. The King of Cups is known to lend an ear and offer sound advice, displaying a unique ability to navigate complex emotional landscapes without becoming overwhelmed. In turn, they bring a sense of calm and understanding to those around them.

When the King of Cups appears in a personal reading, it could encourage the querent to enhance their emotional intelligence, approach situations with empathy, or seek counsel from someone who embodies these qualities. It's a reminder that strength is not always about physical might, as understanding, patience, and kindness can display profound power.

Reversed: Cold, Indifferent, Moody, Immature, Overreaction, Manipulative

Encountering the reversed King of Cups can prompt introspection in a personal context. It invites reflection on how one manages emotions, needs for better emotional self-control, and whether suppressed feelings disrupt decision-making and interactions. It serves as a reminder of the significance of emotional clarity and the risks of unchecked emotions guiding one's path.

This inverted card can point to someone who is emotionally unstable, prone to mood swings, or not displaying the maturity and calm that the upright King of Cups embodies. They may conceal or suppress their emotions or resort to unhealthy coping mechanisms such as excessive drinking or escapism. Instead of being an empathetic counselor, this King can become deceptive and let their emotional disturbances cloud their judgment or lead them down unreliable paths.

Upright Interpretations

General Reading: You may be interacting with or embodying someone who provides emotional support, offers wise counsel, or exudes a calming presence in tumultuous times. This card encourages a balanced approach to situations, relying on both intellect and emotion to navigate challenges.

Love Reading: For singles, this might indicate the arrival of a mature, emotionally available partner. For those in a relationship, it represents a phase of emotional stability and compassionate communication.

Health Reading: When considering health, the King of Cups encourages finding emotional balance. It suggests that emotional well-being plays a significant role in physical health. Seeking counseling or finding supportive individuals can aid in healing and wellness.

Career Reading: You or someone in a position of authority may be using emotional intelligence to guide and mentor others. It's a good time for negotiations, partnerships, and team collaborations.

Reversed Interpretations

General Reading: The King of Cups reversed might indicate emotional manipulation, moodiness, or someone who's out of touch with their feelings. It could suggest a need for better emotional self-control or indicate the presence of suppressed or unresolved emotional issues.

Love Reading: There might be issues of emotional unavailability, lack of trust, or an unwillingness to open up and be vulnerable.

Health Reading: The reversed King of Cups in a health context might point to suppressed emotional issues affecting physical health. It's a reminder that emotional and mental health shouldn't be neglected. It might also indicate unhealthy coping mechanisms like excessive drinking or escapism.

Career Reading: Emotions are running high, or there's a lack of emotional intelligence from leadership. It can also point to a situation where personal feelings are interfering with professional decisions or someone in authority is not as emotionally mature or supportive as they should be.

The King of Cups embodies emotional intelligence, balance, and diplomacy. It depicts a regal figure who has mastered their emotions, exuding a composed demeanor even when faced with tumultuous waters. The King is often shown seated on a throne, with a cup representing emotions in one hand and a scepter symbolizing authority in the other. Despite the choppy waters surrounding them, the King remains steadfast, a testament to their ability to stay balanced in times of emotional upheaval. In the distance, a ship can be seen, highlighting mastery over their emotions in all situations, calm or turbulent.

The fish jumping out of the water and the ship sailing smoothly in the background signify the King's mastery over the unconscious mind and their ability to navigate deep emotions without getting overwhelmed. The throne, adorned with sea creatures, emphasizes control over the emotional and intuitive realms, offering a compassionate and empathetic approach to wise counsel. The king's emotional stability is a model for all, showing us how to constructively manage and express our feelings. The King of Cups is a beacon of hope and understanding, offering guidance to those who need it and reminding us all to master our emotions and maintain balance in all aspects of life.



ZODIAC: Pisces (February 19 – March 20) is a Water sign ruled by Neptune. Pisceans are known for their emotional depth and keen intuition.



Scorpio (October 23 – November 21) is a Water sign ruled by Pluto. Scorpions are known for their intensity and depth.



Cancer (June 21 – July 22) is a Water sign ruled by the Moon. Cancers are highly empathetic, although they can be initially perceived as cold and distant. They're often caregivers and nurturing.



ELEMENT: Water rules emotions and is a symbol of healing, peace, dreams, and compassion. It is associated with Winter, the Suit of Cups, and the West cardinal direction.



HERMETIC QABALAH Associated Hebrew Letter: Heh – Window (Vision, Reasoning)



QABALISTIC SEPHIROT: Chokmah (Wisdom)



TIMING: February 9 – March 10