



# PAGE OF CUPS

M I N O R   A R C A N A

**Fish:**  
Happiness,  
Subconscious



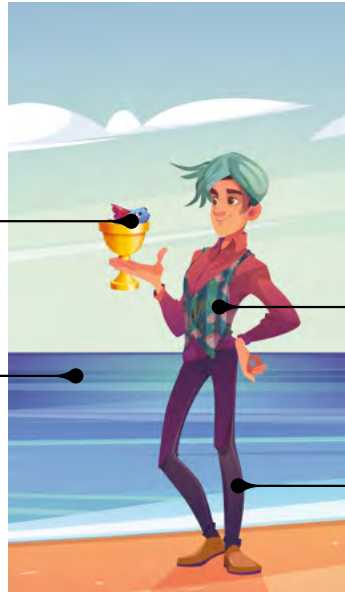
**Sea:**  
Emotions



**Water Lily  
Pattern:**  
Beauty



**Person:**  
Relaxed



**Yes/No Reading:**



**Yes**



**No**



**Maybe**

**Names in Other Tarot Systems:**

**Golden Dawn:** Princess of Cups

**Tarot of Marseilles:** Valet of Cups

**Thoth:** Princess of Cups

			2, 11	7
PLANET	ZODIAC	ELEMENT	NUMEROLOGY	COUNT
	Pisces, Scorpio, Cancer	Water		

**Upright: Happy Surprise, Youth, Dreamer, Sensitivity, Intuitive Messages**

The Page of Cups symbolizes the initial stages of exploring one’s emotions and intuition, promoting introspection and a willingness to embrace emotional sensitivity. It indicates a heightened awareness of emotions, dreams, and spiritual journeys. With an innocent and pure approach, this card often leads to heartwarming surprises and unexpected discoveries. It also represents a strong connection with one’s intuition, often receiving messages through dreams, symbols, or intuitive feelings that provide deeper insights into oneself or one’s circumstances.

The Page of Cups can signal a new emotional beginning, whether it’s blossoming a romantic relationship, rekindling a friendship, or initiating a creative endeavor fueled by passion. It encourages a childlike curiosity towards emotions and an urge to listen to one’s heart while trusting one’s intuition. This isn’t a time for overthinking but for experiencing emotions authentically and with depth.

**Reversed: Emotional Immaturity, Obsession, Envy, Creative Blocks, Insecurity**

The reversed Page may represent individuals who exhibit emotional impulsivity, frequent mood swings, or a tendency to daydream and avoid reality. Such emotional fluctuations can result from a lack of grounding and unrealistic expectations or fantasies. This absence of emotional grounding may also make it challenging to interpret intuitive messages, leaving individuals unable to differentiate between authentic insights and mere whims or fears.

Furthermore, the reversed Page of Cups can signify a period of creative stagnation or strained personal relationships due to emotional insensitivity or miscommunication. It is a time for introspection and reconnection with one’s emotional core, clearing any internal turbulence, and striving for clarity and sincerity in emotional expression. Acknowledging and addressing these challenges can pave the way for emotional growth and deeper intuitive understanding.

## Upright Interpretations

**General Reading:** Embark on a voyage led by your intuition, heart, and imagination. Remain receptive to unforeseen developments, pursue your aspirations, and have faith in your instincts. Allow this card to inspire you to embrace your emotional sensitivity, pay attention to your inner emotions, and chase after your dreams.

**Love Reading:** This could indicate a new relationship, a deepening of an existing bond, or a period of emotional exploration within the relationship. If single, you might receive a message or gesture from a potential romantic interest.

**Health Reading:** The Page of Cups in a health reading can signify a time of emotional healing and rejuvenation. Listening to your body and intuition can lead to insights about your well-being. It can also point to a positive message or news related to health.

**Career Reading:** In terms of career, the Page of Cups may indicate new creative opportunities or projects coming your way. It suggests trusting your intuition in professional matters and being open to unexpected opportunities. This is a good time to embrace your creative ideas and share them.

## Reversed Interpretations

**General Reading:** You're feeling emotional immaturity, disillusionment, or a disconnect from your intuition. It might suggest you are letting your emotions control your actions without considering the consequences or you're failing to listen to your intuitive insights.

**Love Reading:** When reversed in a love reading, the Page of Cups suggests emotional misunderstandings, miscommunication, or unexpressed feelings. There might be unrealistic expectations or daydreams about a relationship that don't align with reality.

**Health Reading:** In its reversed position, this card might indicate neglecting emotional well-being or suppressing feelings, leading to stress or anxiety. It's a call to pay attention to emotional and mental health and to seek support if needed.

**Career Reading:** There may be missed opportunities due to emotional uncertainty or creative blocks. It can also suggest miscommunication or misunderstandings at the workplace. It's essential to ground oneself and approach situations with clarity.

The Page, a youthful figure, is typically portrayed in the card standing by the water's edge and holding a golden cup that contains a fish or other sea creature, seemingly communicating with him. Unlike other cups in the suit that carry heavy emotional symbolism, this cup brings a surprise element. The fish within symbolizes the card's connection to emotions, intuition, and the subconscious.

The Page's clothing is adorned with images of waves or clouds, highlighting a link to emotions' fluidity and the realm of dreams. The card's background often displays water and land, suggesting a balance between emotion and reality, or perhaps the edge where conscious and unconscious meet.

The overall aura of the card is one of dreaminess, introspection, and curiosity. The Page's youthful appearance represents emotional exploration, vulnerability, and innocence. The fish's unexpected conversation indicates sudden intuitive insights or surprising emotional truths that can arise when least expected, necessitating an approach with openness and curiosity.



**ZODIAC:** Pisces (February 19 – March 20) is a Water sign ruled by Neptune. Pisceans are known for their emotional depth and keen intuition.



Scorpio (October 23 – November 21) is a Water sign ruled by Pluto. Scorpions are known for their intensity and depth.



Cancer (June 21 – July 22) is a Water sign ruled by the Moon. Cancers are highly empathetic, although they can be initially perceived as cold and distant. They're often caregivers and nurturing.



**ELEMENT:** Water rules emotions and is a symbol of healing, peace, dreams, and compassion. It is associated with Winter, the Suit of Cups, and the West cardinal direction.



**HERMETIC QABALAH** Associated Hebrew Letter: Heh – Window (Vision, Reasoning)



**QABALISTIC SEPHIROT:** Malkuth (Kingdom)



**TIMING:** September 21 – December 20