



EIGHT OF CUPS

M I N O R A R C A N A

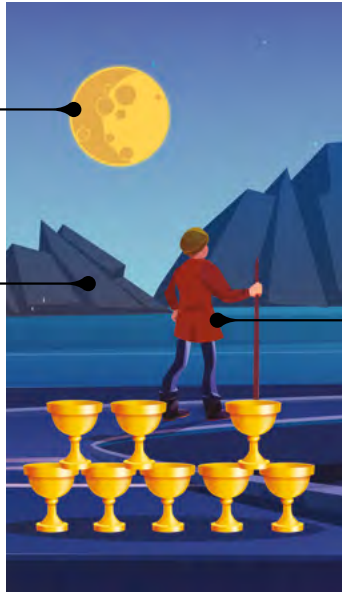
Sun/Moon:
Psyche Paradox



Mountains:
Challenges



Figure: Avoidance
of Choices



Yes/No Reading:



Yes



No



Maybe

Names in Other Tarot Systems:

Golden Dawn: Lord of Abandoned Success

Tarot of Marseilles: Eight of Cups

Thoth: Indolence

				
PLANET	ZODIAC	ELEMENT	NUMEROLOGY	COUNT
Saturn	Pisces, Scorpio, Cancer	Water		

Upright: Disillusionment, Abandonment, Fatigue, Withdrawal, Escapism

This positioning indicates a moment in life when, due to self-reflection or external events, one realizes that what used to bring joy, satisfaction, or emotional fulfillment is no longer fulfilling. Things, relationships, or situations that once provided happiness may now feel hollow or unsatisfying.

This card symbolizes bravery and the challenging decision to escape what is familiar. Leaving behind what is comfortable is never easy, but the Eight of Cups indicates that this departure is essential for growth and self-discovery.

The Eight of Cups is about something other than aimlessly wandering or escaping problems. It's a deliberate and thoughtful journey towards a higher purpose or state of being. While a sense of loss or sadness may be associated with leaving the past behind, there is also an underlying sense of optimism. The card encourages trust in one's intuition and the belief that, though the path ahead may be uncertain, it will ultimately lead to a more fulfilling and meaningful existence.

Reversed: Avoidance, Doubt, Fear of Change, Aimless Drifting, Stagnation

The reversed Eight of Cups alludes to hesitation and reluctance. The upright position concentrates on the brave choice of abandoning what no longer serves to pursue a more significant goal. One may be avoiding the profound introspective work needed to move forward. This can lead to a vicious cycle in which one finds themselves in the same unfulfilling circumstances repeatedly, seeking escape but not addressing the underlying cause of their dissatisfaction.

The reversed Eight of Cups also indicates a realization that something once discarded still has value. In such cases, the card encourages a thoughtful return, reconciliation, or reintegration, but with a clearer understanding of its worth and significance in one's life.

Upright Interpretations

General Reading: It's possible that you're sensing a desire to move away from circumstances or connections that no longer nourish your greater self. The guidance this card offers is to have faith in your instincts and venture towards what feels best, regardless of the fact that it may require leaving what's familiar.

Love Reading: You're not feeling fulfilled. It's essential to evaluate if this can be addressed or if it's time to move on for personal growth. For singles, it can signify the need to leave behind old wounds or past relationships to invite new love.

Health Reading: You need to leave behind unhealthy routines or mindsets to seek better health and mental peace. It could also point towards seeking alternative treatments or therapies.

Career Reading: It might be time to evaluate if your current job or profession aligns with your deeper passion or purpose. If you're feeling unfulfilled, the Eight of Cups encourages considering a change, even if it means venturing into the unknown.

Reversed Interpretations

General Reading: You're having a hard time letting go due to unresolved emotions. It can also suggest returning to old situations or relationships, not necessarily because they offer fulfillment but because of fear or familiarity.

Love Reading: There might be a reluctance to address underlying issues. There's a possibility of clinging to a relationship due to fear of being alone, even if it isn't emotionally satisfying. For singles, it can signify being stuck in the past, hindering the potential for new relationships.

Health Reading: You may be struggling to let go of unhealthy habits or in denial about aspects of your health. The reversed Eight of Cups is a call to confront these issues directly and make necessary changes. Alternatively, you might be reconsidering a health choice or returning to a previous therapy or treatment.

Career Reading: There might be a reluctance to leave a secure job, even if it doesn't resonate with your true calling. On the flip side, it could also mean revisiting a previous job or profession that still has lessons to offer.

In the Eight of Cups, a solitary figure is captured striding away from a pile of eight cups. Traditionally regarded as representative of past experiences and emotional ties, the cups appear lopsided, with one cup needing to be put in the right place. The backdrop is usually rugged terrain, indicating an arduous journey or spiritual pilgrimage ahead. The moon, typically full or crescent, symbolizes the subconscious and the domain of intuition and dreams.

The card imagery evokes a sense of abandonment, but not a result of a capricious or heedless act. Instead, it indicates a more profound, introspective rationale for departure. The formerly treasured cups are now regarded as insufficient or no longer gratifying. The protagonist's quest embodies a personal voyage seeking purpose, a higher truth, or a spiritual awakening.

The Eight of Cups epitomizes personal transformation, forsaking the familiar or comfortable to pursue more profound significance and contentment. It resonates with disenchantment but also underscores the courage to follow one's true calling, even traversing unfamiliar terrain.



ZODIAC: Pisces (February 19 – March 20) is a Water sign ruled by Neptune. Pisceans are known for their emotional depth and keen intuition.



Scorpio (October 23 – November 21) is a Water sign ruled by Pluto. Scorpions are known for their intensity and depth.



Cancer (June 21 – July 22) is a Water sign ruled by the Moon. Cancers are highly empathetic, although they can be initially perceived as cold and distant. They're often caregivers and nurturing.



ELEMENT: Water rules emotions and is a symbol of healing, peace, dreams, and compassion. It is associated with Winter, the Suit of Cups, and the West cardinal direction.



HERMETIC QABALAH Associated Hebrew Letter: Heh – Window (Vision, Reasoning)



QABALISTIC SEPHIROT: Hod (Splendor)



TIMING: February 19 – February 28