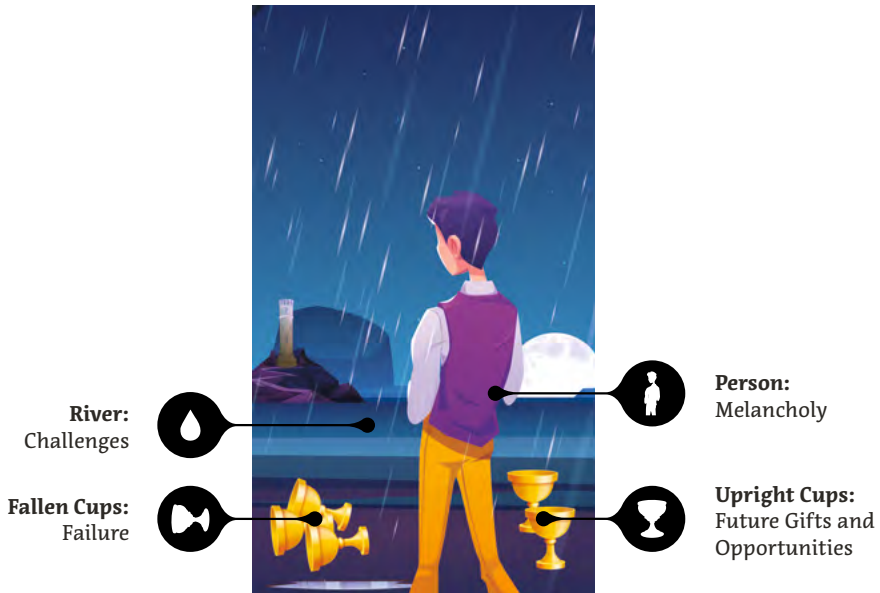




# FIVE OF CUPS

M I N O R   A R C A N A



**Yes/No Reading:**



*Yes*



*No*




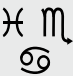

*Maybe*

**Names in Other Tarot Systems:**

**Golden Dawn:** Lord of Loss in Pleasure

**Tarot of Marseilles:** Five of Cups

**Thoth:** Disappointment

			5, 15	5
PLANET Mars	ZODIAC Pisces, Scorpio, Cancer	ELEMENT Water	NUMEROLOGY	COUNT

**Upright: *Tragedy, Loss, Grief, Remorse, Lost Opportunity, Heartbreak, Misery***

The upright Five of Cups encompasses emotions of regret, disappointment, and loss. Its illustration often portrays a cloaked figure standing before three cups spilled over while two remain behind them. This visual representation evokes a feeling of sadness for what was lost or opportunities that were missed. The cups that have spilled signify sorrow, previous mistakes, or events that have caused emotional distress, emphasizing the concept of dwelling on past sorrows.

Despite its negative connotations, the Five of Cups conveys a subtle but significant message of optimism and outlook. The two cups behind the figure symbolize the good that remains or the new possibilities yet to be recognized. While the past pain is authentic and reasonable, this card urges the reader to shift their attention from what has been lost to what can still be achieved or appreciated. It serves as a reminder that although we cannot alter the past, we can impact our present and future by selecting where we direct our attention.

**Reversed: *Moving On, Forgiveness, Letting Go, Recovering, Healing, Acceptance***

The reversed Five of Cups indicates a transition from sorrow and regret to acceptance and optimism. This shift in perspective implies that the period of intense grieving or disappointment is fading or has fulfilled its purpose. Dwelling solely on past losses or errors is now seen as unproductive. Instead, there is a growing desire to move forward with newfound knowledge and a heart open to healing.

Additionally, the reversed Five of Cups represents resilience and renewal. It marks the start of emotional healing and a renewed spirit. This card urges the querent to practice forgiveness, whether towards oneself or others, and to look for the positives or opportunities in their situation. By accepting and integrating past pain, one can make way for new beginnings and a brighter outlook for the future.

## Upright Interpretations

**General Reading:** The Five of Cups in its upright position denotes a sense of loss, grief, and disappointment in general readings. It could stem from past events or mistakes leading to regret. Although the spilled cups signify lost opportunities or pain, it's important to note the two standing cups behind the figure as evidence that not all is lost.

**Love Reading:** In love readings, this card could indicate a rough patch, a breakup, or lingering regret in a relationship. It serves as a reminder to focus on what can still be salvaged or the lessons that can be learned. For singles, it might represent dwelling on past relationships and overlooking potential new ones.

**Health Reading:** For health readings, the card represents feelings of despair or depression, with emotional pain taking a toll on physical well-being. Seeking help is essential, and one must remember that healing and recovery are possible.

**Career Reading:** Regarding career matters, this card highlights potential challenges, disappointments, or even job losses. Regret over past decisions may be weighing heavily. Nevertheless, there are still options to explore and paths to consider, even if they are not immediately apparent.

## Reversed Interpretations

**General Reading:** When the Five of Cups is reversed, it serves as a sign of acceptance, progress, and newfound hope following a time of disappointment or sorrow. While the lingering pain of the past may still exist, there is a stronger focus on moving forward and recognizing the positive aspects of life.

**Love Reading:** In matters of love, this card's reversal can signify the process of healing, forgiveness, and the possibility of reconciliation after a disagreement for those in relationships. For singles, it can indicate the start of a journey to move on from past hurt and be open to new romantic possibilities.

**Health Reading:** Regarding health, the reversed Five of Cups denotes a period of renewal and recovery. Emotional wounds are starting to heal, leading to a restored sense of well-being and hope. It reminds us of the resilience of our minds and bodies.

**Career Reading:** This card's reversal prompts reflection, learning from previous mistakes, and a positive outlook on future professional endeavors. New job opportunities or a change in perspective about one's career path may arise.

The somber scene depicted on the Five of Cups captures feelings of regret and loss, often showcasing a figure draped in black or dark clothing to symbolize grief. Positioned before them are three cups that have been overturned, spilling their contents onto the ground, representing missed opportunities, past errors, or disappointments. This sorrowful image encourages dwelling on past sorrows or missed chances, emphasizing the primary theme of the card.

Despite the grief that consumes the central figure, two cups remain upright, often overlooked and serving as symbols of hope, new possibilities, or things worth cherishing amidst disappointment. The card's background might feature a river, bridge, or castle in the distance, hinting at the journey of life and the need to keep moving forward. Altogether, the Five of Cups powerfully reminds us that pain and hope coexist in life, urging us to shift our focus from what's lost to what remains and the potential of the future.



**ZODIAC:** Pisces (February 19 – March 20) is a Water sign ruled by Neptune. Pisceans are known for their emotional depth and keen intuition.



Scorpio (October 23 – November 21) is a Water sign ruled by Pluto. Scorpions are known for their intensity and depth.



Cancer (June 21 – July 22) is a Water sign ruled by the Moon. Cancers are highly empathetic, although they can be initially perceived as cold and distant. They're often caregivers and nurturing.



**ELEMENT:** Water rules emotions and is a symbol of healing, peace, dreams, and compassion. It is associated with Winter, the Suit of Cups, and the West cardinal direction.



**HERMETIC QABALAH** Associated Hebrew Letter: Heh – Window (Vision, Reasoning)



**QABALISTIC SEPHIROT:** Geburah (Severity)



**TIMING:** October 23 – November 1