



# TWO OF CUPS

M I N O R   A R C A N A

**Red Lion:** Passion,  
Sexual Energy



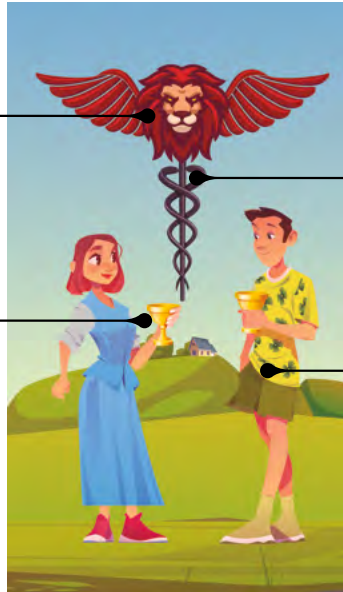
**Staff of Hermes/  
Caduceus:**  
Healing



**Cup:**  
Spiritual Power,  
Human Soul



**Two People:**  
Masculine and  
Feminine Energy,  
Unity, Partnership



**Yes/No Reading:**



**Yes**



**No**



**Maybe**

**Names in Other Tarot Systems:**

**Golden Dawn:** Lord of Love

**Tarot of Marseilles:** Two of Cups

**Thoth:** Love

			2, 11	2
PLANET	ZODIAC	ELEMENT	NUMEROLOGY	COUNT
Venus	Pisces, Scorpio, Cancer	Water		

**Upright: Fairness, Peace, Romantic Love, Unity, Partnership, Connection**

The Two of Cups symbolizes a significant and profound bond between two individuals, based on mutual respect, comprehension, and a shared emotional frequency. When this card appears, whether in a platonic, romantic, or professional relationship, it usually indicates the potential of teamwork and harmony.

The Two of Cups is more than just a superficial link; it often implies a soulful relationship or a connection through fate. Additionally, the card alludes to balance, not only in terms of an external relationship but also in the harmony between one’s masculine and feminine energy or rational and emotional nature.

**Reversed: Imbalance, Separation, Broken Connection, Tension, Inequity, Fights**

The reversed Two of Cups typically signifies a disruption in harmony and mutual understanding. It can represent a relationship where there’s a lack of reciprocity, or where one party feels undervalued or misunderstood.

This position might also indicate external factors that strain a relationship, such as interference from others, or situations where shared goals and values start to diverge, causing tensions.

In some cases, the reversed Two of Cups can also suggest a need for personal boundaries, or a period where individuals might need to focus on their personal growth before they can successfully collaborate or bond with others.

## Upright Interpretations

**General Reading:** The Two of Cups symbolizes partnership, mutual respect, and a harmonious balance between two individuals. It often points to a deep connection or a bond that is both emotional and spiritual.

**Love Reading:** This card is a very positive omen, indicating mutual attraction, commitment, and a deep emotional bond between partners. It can represent the early stages of a romantic relationship or the deepening of an existing one.

**Health Reading:** The Two of Cups suggests emotional balance and harmony, which can lead to physical well-being. It might also indicate a healing partnership, such as a beneficial therapist-patient relationship.

**Career Reading:** In a professional context, the card signifies partnerships and collaborations that are built on mutual respect and shared goals. It can point to a successful business partnership or teamwork.

## Reversed Interpretations

**General Reading:** The reversed Two of Cups might indicate a disharmony or imbalance in a relationship. There could be misunderstandings, miscommunications, or a disconnect between two individuals.

**Love Reading:** This card reversed can suggest a strain in a romantic relationship, a potential breakup, or feelings of being out of sync with your partner. It can also indicate a one-sided relationship.

**Health Reading:** For health, it might suggest emotional imbalances or stress due to relationship issues. It could also imply a lack of mutual understanding in a therapeutic relationship.

**Career Reading:** The reversed Two of Cups can indicate disagreements, conflicts, or a partnership that's not yielding desired results.

The Two of Cups embodies the profound nature of human connections, whether romantic, platonic, or business-oriented. When this card appears, whether in a romantic, platonic, or professional context, it signifies the potential for teamwork and harmonious collaboration.

The card showcases two people, usually depicted as a man and a woman, who symbolize unity and partnership. Their equal stance and the way they face each other indicate mutual respect and the balanced nature of their relationship. They hold two cups, which symbolize the emotional and spiritual gifts that each brings to the relationship.

Typically appearing between the two figures, the caduceus - a staff with two snakes winding around it - symbolizes commerce, negotiation, and balance. This emphasizes the theme of partnership and mutual exchange in the relationship. Often seen above the caduceus, the lion represents strength, passion, and courage. In the context of this card, it suggests a robust and passionate bond between the individuals.



**ZODIAC:** Pisces (February 19 – March 20) is a Water sign ruled by Neptune. Pisceans are known for their emotional depth and keen intuition.



Scorpio (October 23 – November 21) is a Water sign ruled by Pluto. Scorpios are known for their intensity and depth.



Cancer (June 21 – July 22) is a Water sign ruled by the Moon. Cancers are highly empathetic, although they can be initially perceived as cold and distant. They're often caregivers and nurturing.



**ELEMENT:** Water rules emotions and is a symbol of healing, peace, dreams, and compassion. It is associated with Winter, the Suit of Cups, and the West cardinal direction.



**HERMETIC QABALAH** Associated Hebrew Letter: Heh – Window (Vision, Reasoning)



**QABALISTIC SEPHIROT:** Chokmah (Wisdom)



**TIMING:** June 21 – July 1