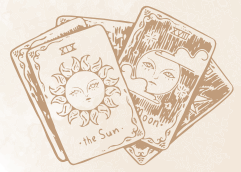


# 4. The Emperor

*Authority, divine masculine, structure, control*

MAJOR ARCANA



Classical element:



AIR



FIRE



EARTH



WATER

Zodiac sign/planet:

Numerology:

**YOUR FIRST IMPRESSION OF THE CARD**

☐ Positive ☐ Negative ☐ Neutral

**THE EMPEROR'S REFLECTION**

*What standards and principles do you hold yourself and others to? Why?*

Symbols:

**UPRIGHT MEANING**

♥ **LOVE/RELATIONSHIPS**

💼 **CAREER/MONEY**

🌱 **PERSONAL GROWTH**

**REVERSED MEANING**

*Notes*