

-21-

THE WORLD

M A J O R A R C A N A

Aquarius:
Guidance



Red Ribbon:
Cycle Completion



Scorpio:
Vision



Wreath:
Victory,
Cycles of Life



Wands:
Spiritual
Wisdom



Taurus:
Power



Leo:
Bravery



Yes/No Reading:



Yes



No



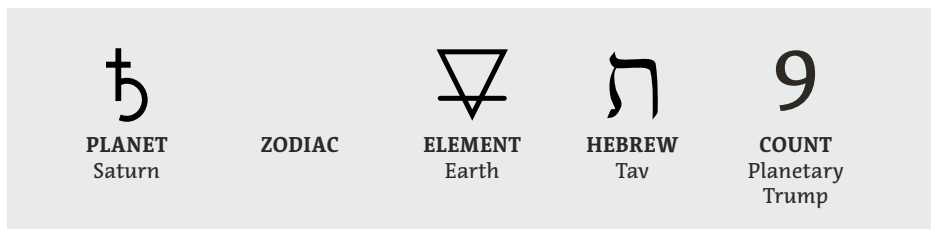
Maybe

Names in Other Tarot Systems:

Golden Dawn: The World

Tarot of Marseilles: Le Monde

Thoth: The Universe



Upright: Completion, Harmony, Fulfillment, Accomplishment, Possibilities

Drawing The World card in an upright position symbolizes completion, achievement, and celebration, marking the end of a journey that could be personal, emotional, or spiritual. This card represents gaining the knowledge and experiences needed to move forward with a sense of understanding and fulfillment.

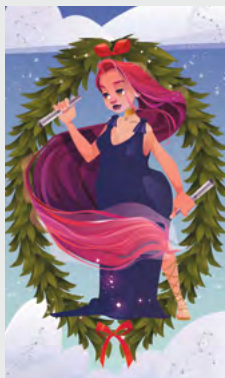
The World also represents unity and wholeness, signifying a balance between the spiritual and physical realms. This card indicates enlightenment and everything falling into place, leaving a feeling of accomplishment and satisfaction from the efforts, struggles, and perseverance taken.

It is a celebratory card that not only marks the end of a chapter but also signifies exciting new beginnings. By embracing the energy of The World card, one recognizes their accomplishments, understands their worth, and prepares to embark on a new journey with the wisdom of past experiences.

Reversed: Delayed Success, Failed Plans, Stagnation, Emptiness

A reversal may indicate a lack of fulfillment, unfulfilled potential, or delayed progress towards one's goals. It may point towards self-imposed or external limitations hindering progress, such as emotional or mental obstacles. It urges the reader to re-examine their path, identify unresolved issues, and tackle them to move forward. The reversed World card may also suggest a feeling of stagnation, where one feels stuck in a particular stage of life, unable to progress further.

However, there is also a positive interpretation of the reversed card. It may signify that the end goal is within reach, with only a few final adjustments needed for completion. This card reminds us not to rush the process but to take time to ensure every detail is in place and every lesson understood before moving forward. Patience, introspection, and perseverance are encouraged, emphasizing that every journey may have setbacks, but with determination, the desired destination can ultimately be reached.



CHAKRA:
Root

TIMING:
Winter, or Slow and Delayed

NUMEROLOGY:
3, 21

ARCANA RELATION:
The Empress

DEITY:
Ahapshi, Ameshet, Asar,
Astraea, Athene, Bacchus, Ceres,
Demeter, Gaia, Iacchus, Kronos,
Mako, Nephthys, Sebek

ANIMAL:
Bull, Crocodile

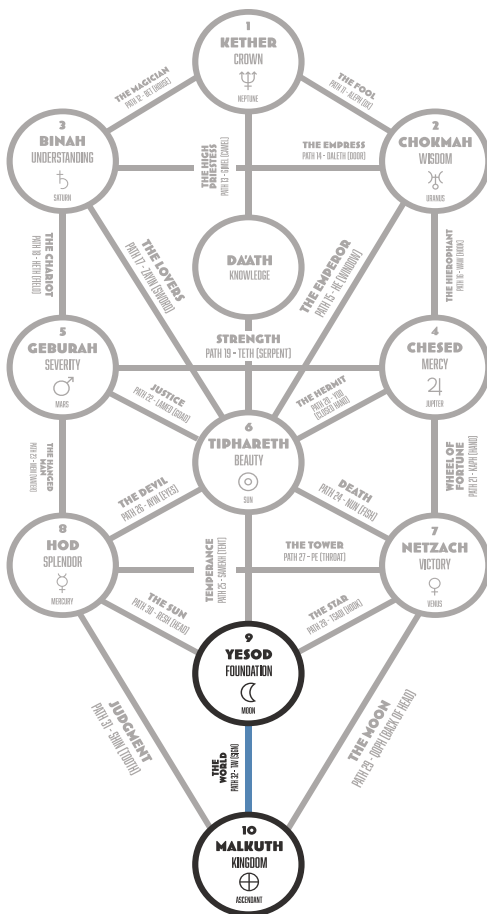
CRYSTAL:
Black Pearl, Jet, Kunzite,
Lapis Lazuli, Larimar, Onyx,
Rhyolite, Unakite

PLANT:
Bay Laurel, Comfrey,
Cypress, Hellebore, Ivy,
Nightshade, Rose, Yew

MAGICKAL ITEM:
Salt

ARCHANGEL:
Cassiel, Uriel

TAROTORIAL® EXPANDED



BROWN
Solidity, Grounding,
Strength



GREY
Stability, Neutrality,
Reserve



BLACK
Dignity, Force,
Stability, Protection

The World is a powerful and profound symbol of ultimate fulfillment, completion, and jubilation. Centrally located on the card is a mesmerizing and dancing figure, typically depicted as an individual who embodies the essence of accomplishment and wholeness, celebrating the victorious end of a long and arduous journey or cycle. Their dance exudes sheer joy and gratitude, symbolizing the harmonious balance with the universe that they have achieved. The oval wreath that surrounds them is a poignant representation of the unceasing cycle of life and seasons, signifying that every ending is merely the precursor to a new beginning.

Located at the four corners of the card, surrounding the central figure, are typically four guardian figures representing the fixed signs of the zodiac: the angel or human (Aquarius), the eagle (Scorpio), the bull (Taurus), and the lion (Leo). These figures embody the interconnectedness of all things and symbolize the balance between spiritual and earthly matters. Their presence on the World card emphasizes the attainment of mastery over diverse realms and unifies the purpose and spirit of all who behold it.

The ultimate theme of the World card is that of unity, wholeness, and achievement. It is an acknowledgment of a significant milestone achieved, a dream realized, or a goal attained. It is the culmination of the journey that the Fool started at the beginning of the Tarot deck and serves as a profound understanding of life's lessons and a recognition of personal growth and development. This card inspires us to celebrate our achievements, no matter how small or significant they may be, and to eagerly look forward to new adventures, secure in the knowledge that with every ending comes the possibility of a new beginning.



PLANET: Saturn is often referred to as the “taskmaster” of the planets. It brings structure, discipline, and the boundaries that are necessary for both personal and societal functioning.



ELEMENT: Earth represents death and rebirth. It is the realm of abundance, prosperity, and wealth. It is associated with Autumn, the Suit of Pentacles, and the North cardinal direction.



HERMETIC QABALAH Associated Hebrew Letter: Tav – Sign, Cross (Covenant, Seal, Truth)



TREE OF LIFE PATHWAY: 32nd Path Between Yesod (Foundation) and Malkuth (Kingdom)