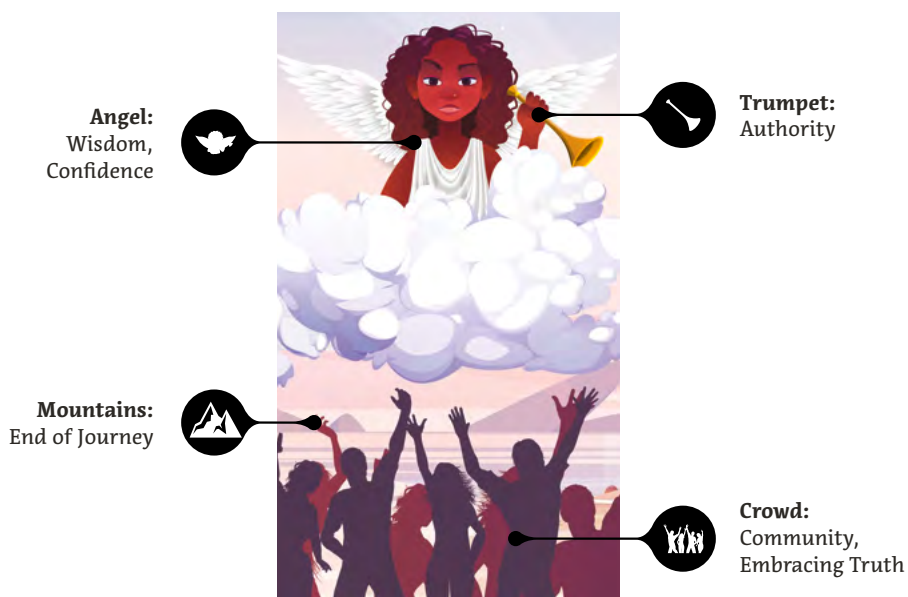


- 20 -

JUDGMENT

M A J O R A R C A N A



Yes/No Reading:



Yes



No



Maybe

Names in Other Tarot Systems:

Golden Dawn: Judgment

Tarot of Marseilles: Le Jugement

Thoth: Æon



PLANET
Pluto

ZODIAC



ELEMENT
Fire



HEBREW
Shin



COUNT
Primordial
Element

Upright: *Redemption, Rebirth, Awakening, Epiphany, Transition, Decisions*

The upright Judgment card signals a momentous occasion of inner awakening and self-realization. It is a time of rebirth, often following introspection and evaluation, encouraging you to release past regrets and embrace a new beginning. Pay attention to your heart's desires and your conscience's clarity as they offer insight.

Moreover, Judgment calls for self-examination and reflection. It invites you to take a moment to consider your past actions and decisions and understand their consequences. By acknowledging and learning from your past, you can make peace with it, offering forgiveness to both yourself and others where necessary. This card may also urge you to reconcile with something from your past, granting closure and allowing for personal growth.

The trumpet's sound on the card represents a higher calling or purpose, beckoning you towards your destiny. Judgment urges you to heed this inner call, whether it's a passion project, a spiritual journey, or a significant life change. Align with your authentic self and pursue what truly matters to you. Embrace this transformative moment, as it may shape the next chapter of your life.

Reversed: *Lacking Logic, Denial, Hasty Decisions, Criticism, Stunted Growth*

You may be facing unresolved issues, internal conflict, or an inability to come to terms with the past. This may lead to an avoidance of making essential decisions or resisting personal transformation. Past actions, regrets, self-doubt, and guilt may cloud your judgment and hinder progress, making it difficult to move forward.

The reversed Judgment card also points to fear of being judged by others, leading to self-imposed isolation or reluctance to confront societal scrutiny. Avoiding responsibility or deflecting issues perpetuates negative behavior cycles and stunts growth. Moreover, the reversed card may signify missed opportunities or ignoring a higher calling. To reconnect with your life's purpose, you must re-evaluate personal values, confront shadows, and be open to transformative powers.



CHAKRA:
Crown

TIMING:
None

NUMEROLOGY:
2, 20

ARCANA RELATION:
The High Priestess

DEITY:
Elohim, Hades, Horus,
Kabeshunt, Mau, Pluto,
Thoum-aesh-Neith,
Vulcan, Yahshuah

ANIMAL:
Lion, Sphinx

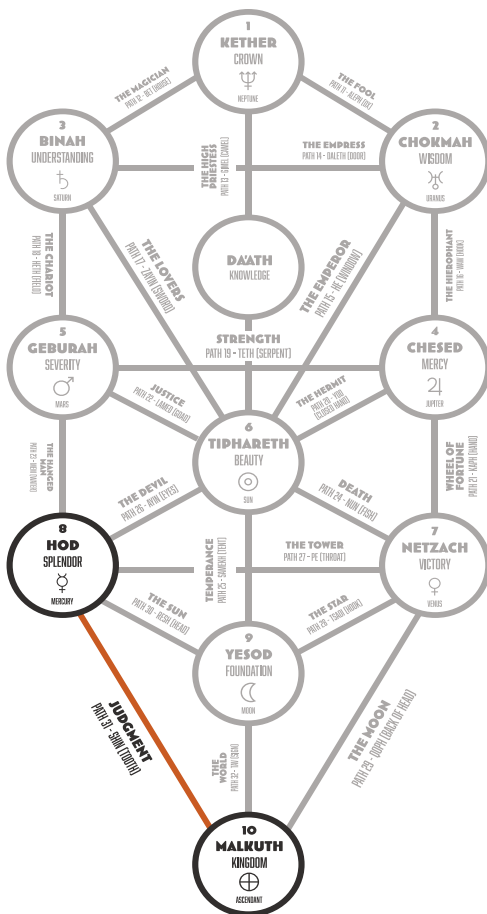
CRYSTAL:
Azurite, Black Diamond,
Fire Opal, Flourite, Hematite,
Kyanite, Labradorite, Malachite,
Meteorite, Moldavite,
Snowflake Obsidian

PLANT:
Goldenseal, Hibiscus, Marigold,
Red Poppy, Violet

MAGICKAL ITEM:
Pyramid of Fire, Wand,
Winged Egg

ARCHANGEL:
Gabriel, Michael

TAROTORIAL® EXPANDED



PURPLE
Spirituality, Wisdom,
Peace, Idealism



ORANGE
Energy, Vitality,
Stimulation



WHITE
Beginning, Humility,
Purity



GOLD
Divinity, Generosity,
Compassion

At the top of the card, an imposing angel—recognized as the Archangel Gabriel—dominates the space, boasting expansive wings and holding a trumpet aloft. Often attached to the trumpet is a flag adorned with a cross. Archangel Gabriel's trumpet signifies a higher calling, urging one to answer the divine or embrace a new path. The card can indicate a sense of redemption, or a fresh start after a period of upheaval.

Below the angel, a group of individuals rise from coffins that appear to be floating on water. Arms outstretched, they gaze in reverence towards the angel, embodying a sense of rebirth and awakening to a new purpose in life. In the far distance, the card depicts imposing mountains, sometimes covered in snow or with a bluish tint. The mountains, although they represent challenges, also signify transformation, suggesting that the journey ahead leads to higher enlightenment.

The primary theme of the Judgment card centers on resurrection, rebirth, and an inner calling. Those emerging from the coffins symbolize newfound purpose and direction, indicative of reflection, evaluation, and self-judgment.



PLANET: Pluto is named after the Roman god of the underworld. Its characteristics and influences are associated with deep transformation, rebirth, and the unseen depths of the psyche.



ELEMENT: Fire represents energy, creativity, and power. It is the realm of love, courage, and action. It is associated with Summer, the Suit of Wands, and the South cardinal direction.



HERMETIC QABALAH Associated Hebrew Letter: Shin – Tooth (Consume, Destroy)



TREE OF LIFE PATHWAY: 31st Path Between Hod (Splendor) and Malkuth (Kingdom)