

- 14 -

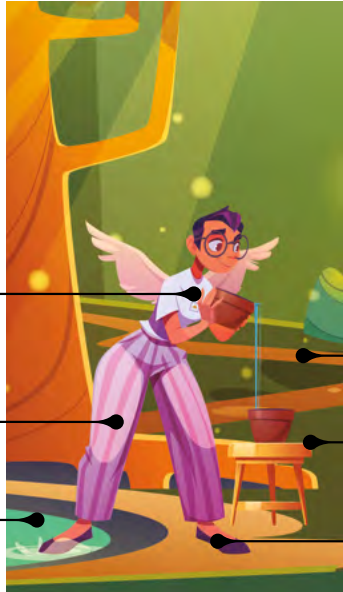
# TEMPERANCE

M A J O R   A R C A N A

**Breastplate:**  
Harmony  
Between Spiritual  
and Material

**Angel:**  
Divine Virtue

**Pond:**  
Subconscious



**Path:** Path to  
Enlightenment

**Mixing Liquids:**  
Union of  
Extremes

**Feet:** Union of  
Subconscious  
and Conscious

**Yes/No Reading:**



Yes



No



Maybe

**Names in Other Tarot Systems:**

Golden Dawn: Temperance

Tarot of Marseilles: Tempérance

Thoth: Art

21

PLANET  
JupiterZODIAC  
SagittariusELEMENT  
FireHEBREW  
Samekh

12

COUNT  
Zodiac  
Trump**Upright: Peace, Calm, Moderation, Patience, Alchemy, Balance, Tranquility**

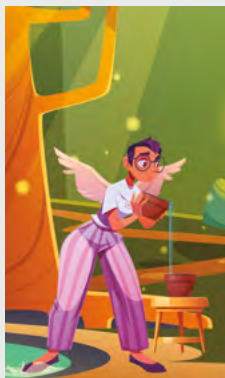
When the Temperance card appears upright, it suggests a period where balance is achieved or necessary in your life. It indicates that you are learning or need to blend different elements in your life harmoniously. This card often points to the importance of compromise and finding the middle ground in disagreements or conflicts. The card also speaks to the virtue of patience, hinting that through measured steps and moderation, you can achieve your goals. It may also reflect a current state of inner peace and serenity, regardless of any external tumult.

Temperance encourages self-control and restraint, steering away from extremes. It can indicate the successful merging of opposites in your life, like work and play or logic and emotion. In relationships, the card can mean harmonious partnerships and the balance of giving and taking. In terms of health, it can point to healing and the restoration of balance in the body and mind.

**Reversed: Extremes, Recklessness, Disruption, Chaos, Excess, Lack of Balance**

The reversed Temperance card suggests that you may be struggling to find middle ground or harmony in certain aspects of your life. Whether it's within relationships, work, or personal habits, there's a tendency toward extremes rather than finding a balanced approach. It can also indicate a possible resistance to change or an unwillingness to adapt, which can further hinder the process of finding balance. In some instances, the card might suggest that you are juggling too many things at once, leading to stress or overwhelm.

In relationships, reversed Temperance might hint at conflicts arising from a lack of compromise or understanding. Both parties might be stubborn, unwilling to bend or see the other's viewpoint. From a health perspective, this card can warn against overindulgence, whether it's in food, drink, or other habits, suggesting that moderation is key to well-being.



**CHAKRA:**  
Crown, Third Eye, Heart

**TIMING:**  
November 22 — December 21

**NUMEROLOGY:**  
5, 14

**ARCANA RELATION:**  
The Hierophant

**DEITY:**  
Iris, Maat, Trivia

**ANIMAL:**  
Dog, Centaur, Hippogriff, Horse

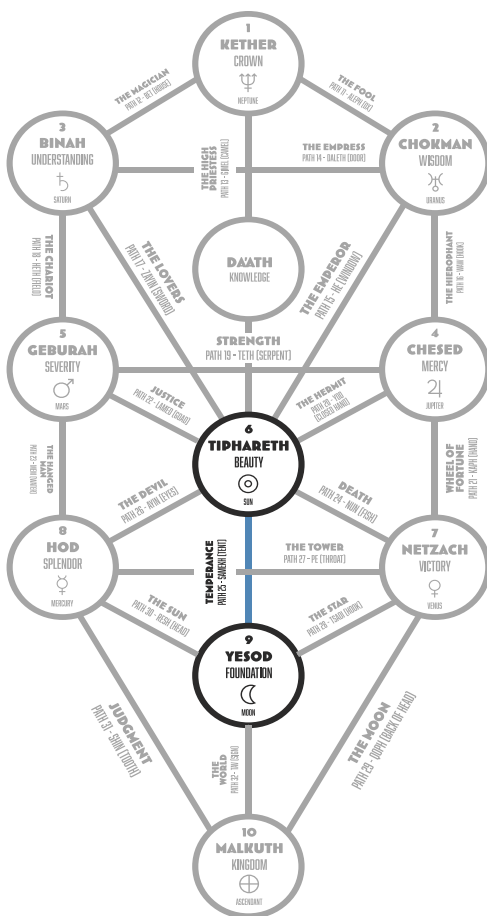
**CRYSTAL:**  
Amethyst, Diamond, Golden  
Topaz, Jacinth, Sapphire

**PLANT:**  
Agrimony, Echinacea, Foxglove,  
Kunzite, Rush, Valerian

**MAGICKAL ITEM:**  
Arrow, Book of Shadows

**ARCHANGEL:**  
Raguel, Sachiel

## TAROTORIAL® EXPANDED



**RED**

Desire, Passion,  
Power, Vitality



**INDIGO**

Emotion, Fluidity,  
Expressiveness



**PURPLE**

Spirituality, Wisdom,  
Peace, Idealism



**GOLD**

Inner Strength,  
Understanding

The Temperance card emphasizes the significance of balance and harmony in life. It prompts the seeker to embrace moderation, steer clear of extremes, and strive for equilibrium in all endeavors. Central to this card is an androgynous angel, poised with one foot on land and the other in water, capturing the essence of balance between the tangible and intangible realms. This angel is often portrayed transferring fluid from one vessel to another, a symbolic gesture of energy equilibrium and the blending of opposites.

In the backdrop, a pathway stretches towards a distant mountain crowned by a radiant sun or emblem, an allegory for the long quest towards enlightenment or spiritual fulfillment. The wings of the angel allude to divine communications and celestial realms. In some artistic renditions, a triangle graces the angel's brow, embodying the spirit and divine connectivity.



**ZODIAC:** Sagittarius (November 22 – December 21) is a Fire sign ruled by Jupiter. Sagittarians are often seen as the optimists of the zodiac, always looking at the brighter side of life.



**PLANET:** Jupiter is the planet of higher learning and philosophy. It signifies expansion, growth, and abundance. When Jupiter's influence is felt, things tend to magnify.



**ELEMENT:** Fire represents energy, creativity, and power. It is the realm of love, courage, and action. It is associated with Summer, the Suit of Wands, and the South cardinal direction.



**HERMETIC QABALAH** Associated Hebrew Letter: Samekh – Tent, Prop (Support, Doctrine)



**TREE OF LIFE PATHWAY:** 25th Path Between Tiphareth (Beauty) and Yesod (Foundation)