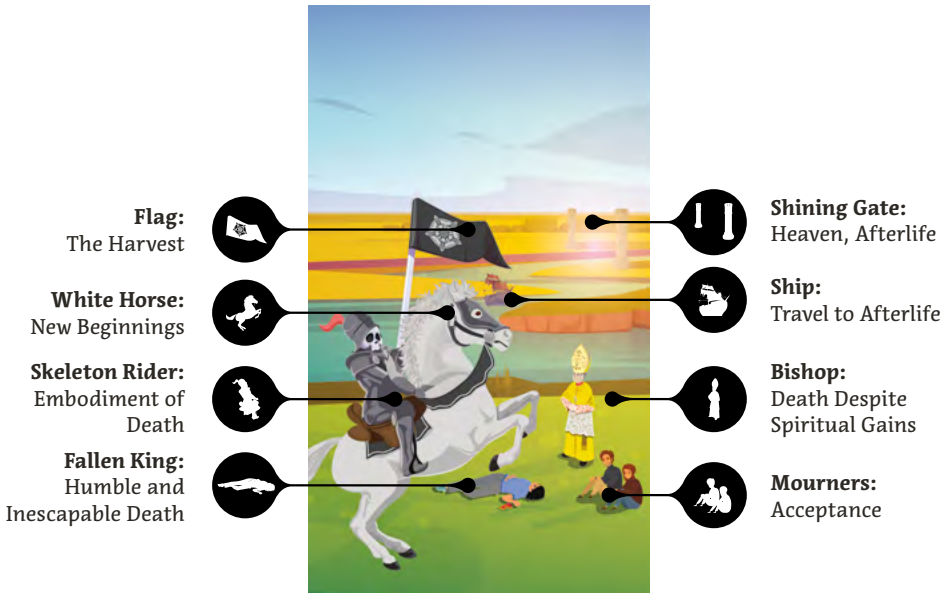


- 13 -

DEATH

M A J O R A R C A N A



Yes/No Reading:



Yes



No



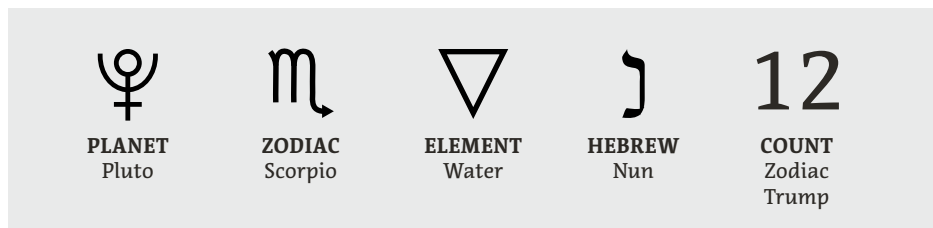
Maybe

Names in Other Tarot Systems:

Golden Dawn: Death

Tarot of Marseilles: La Mort

Thoth: Death



Upright: Change, Metamorphosis, Endings, New Beginnings, Transformation

The upright Death card in the Tarot heralds a period of transformation, shifting circumstances, and the closure of a specific chapter in one's journey. This card underscores life's ever-changing rhythm.

When this card emerges in a reading, it suggests an impending transformational shift in your life. This could mark the conclusion of a relationship, the end of a known life phase, or a significant change in your worldviews. While the concept of "death" can evoke apprehension, in this context, it represents renewal and a chance to start anew.

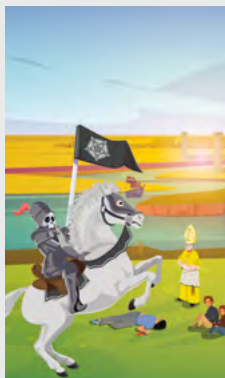
Life, like the seasons, is cyclical and change is a crucial component of personal growth and evolution. The Death card implies a need to release obsolete beliefs, patterns, or relationships. This process opens up space for fresh perspectives, new experiences, and personal growth.

Reversed: Resistance, Blocked, Depression, Illness, Fear of Change, Stagnation

When the Death card appears reversed, it implies an aversion to change and a reluctance to let go of past beliefs and situations. There may be a fear of the unknown that prompts one to hold onto what's familiar, even if it no longer serves a purpose.

The card's position suggests a necessary transformation, yet one may feel stuck or uncertain about what steps to take. Despite outward appearances, inner growth and self-reflection may be occurring. Sometimes, this reversed card indicates a delay in an inevitable shift or conclusion.

Although this pause offers an opportunity for introspection, it's crucial not to prolong it unnecessarily. It's essential to remember that change is inevitable and that embracing it is necessary for growth.



CHAKRA:
Sacral

TIMING:
Within a month,
or Oct 23 – Nov 21

NUMEROLOGY:
4, 13

ARCANA RELATION:
The Emperor

DEITY:
Apep, Apollo, Ares, Khephra,
Mars, Thanatos, Typhon

ANIMAL:
Beetle, Crayfish, Lobster,
Scorpion, Shark, Wolf

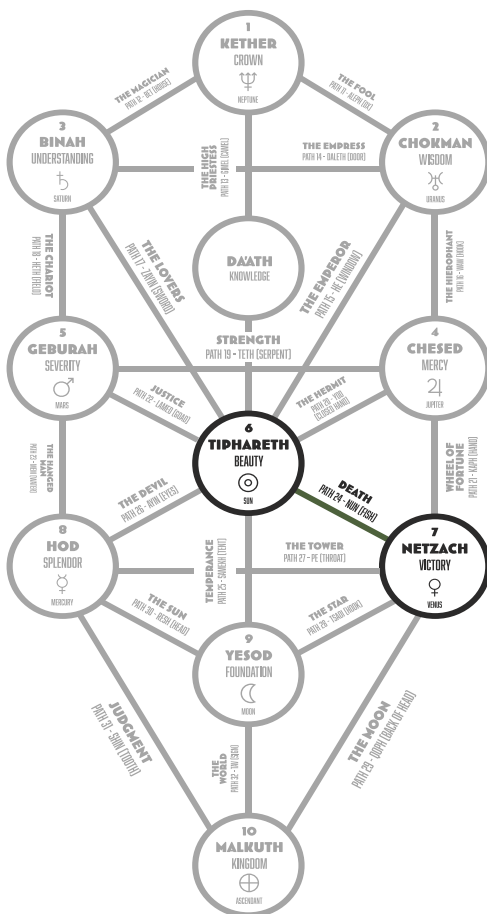
CRYSTAL:
Amber, Black Tourmaline,
Bloodstone, Garnet, Jet,
Lodestone, Obsidian, Opal,
Ruby, Snakestone, Tiger's Eye

PLANT:
Aspen, Blackberry, Bramble,
Cactus, Elder Flowers, Myrtle,
Nettle, Periwinkle, Yew

MAGICKAL ITEM:
The Pain of the Obligation

ARCHANGEL:
Azrael, Jeremiel

TAROTORIAL® EXPANDED



RED

Desire, Passion,
Power, Vitality



BLACK

Dignity, Force,
Stability, Protection



PURPLE

Spirituality, Wisdom,
Peace, Idealism



BROWN

Endurance, Solidity,
Grounding, Strength

The Death card in the Tarot deck is an iconic but commonly misconstrued card. Despite its eerie reputation, it rarely represents actual death. Rather, it symbolizes profound transformations, endings, and new beginnings.

Visually, the Death card displays a skeletal figure riding on a horse and advancing forward. The skeleton, stripped of all superficial layers, embodies the most basic and inevitable aspect of human existence: mortality. The horse, usually white, signifies purity and the unstoppable flow of time and life. In some versions, the rider carries a black flag adorned with a white, five-petaled rose, representing beauty, purification, and immortality.

Surrounding the skeletal figure, other characters of various social statuses are often depicted, emphasizing the universality of death. In the background, the card may display a rising sun, a ship sailing on water, or two towers, signifying the cyclical nature of life and the promise of continuity after every ending. The Death card conveys not fear but rather acceptance, transformation, and the natural rhythms of life and death.



ZODIAC: Scorpio (October 23 – November 21) is a Water sign ruled by Pluto. Scorpios are known for their intensity and depth.



PLANET: Pluto is named after the Roman god of the underworld. Its characteristics and influences are associated with deep transformation, rebirth, and the unseen depths of the psyche.



ELEMENT: Water rules emotions and is a symbol of healing, peace, dreams, and compassion. It is associated with Winter, the Suit of Cups, and the West cardinal direction.



HERMETIC QABALAH Associated Hebrew Letter: Nun – Fruit, Fish (Sprouting, Activity, Life)



TREE OF LIFE PATHWAY: 24th Path Between Tiphareth (Beauty) and Netzach (Victory)