

-6-

THE LOVERS

M A J O R A R C A N A



Yes/No Reading:



Yes



No







Maybe

Names in Other Tarot Systems:

Golden Dawn: The Lovers

Tarot of Marseilles: L'Amoureux

Thoth: The Lovers

				12
PLANET Mercury	ZODIAC Gemini	ELEMENT Air	HEBREW Zayin	COUNT Zodiacal Trump

Upright: Connection, Partnership, Commitment, Love, Trust, Marriage

The Lovers card, in its upright form, stands as a testament to the bonds formed between two entities. Whether these ties are romantic, platonic, or spiritual, there's a deep connection and understanding between the involved parties. This card can signify the blossoming of a romantic relationship or the strengthening an existing bond. Beyond romance, it may indicate a choice with the heart, emphasizing the importance of personal values and integrity.

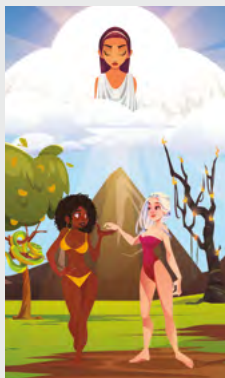
There is a harmony between the conscious and subconscious mind. Your decisions at this time are likely aligned with your higher self and personal truths. It can also imply that, in a situation, partnership or collaboration will bring about the best outcome. The Lovers can also signal a crossroads in one's life, where choices rooted in personal beliefs and values come into play. It urges you to make decisions with both the heart and mind, maintaining an equilibrium between emotion and logic.

Reversed: Unwise Plans, Conflict, Infidelity, Separation, Imbalance

Reversed, The Lovers card indicates potential strife, misalignment, or a lack of harmony in relationships or decisions. It could be a sign of a relationship facing challenges, miscommunication, or the possibility of a breakup. The bond that once felt so strong may now be tested, urging you to reflect upon the foundation of your relationship.

A reversed Lovers card can also point to internal conflict, especially regarding personal choices and values. You might be facing a decision that challenges your moral beliefs or causes inner turmoil. It's a reminder to realign with your core values, even when faced with tough choices.

You might feel out of sync with your inner self, leading to choices that may not be in your best interest. It prompts introspection, asking you to reassess the decisions you're making and the relationships you're nurturing.



CHAKRA:
Heart

TIMING:
May 21 – June 20

NUMEROLOGY:
6, 15

ARCANA RELATION:
The Devil

DEITY:
Apollo, Castor and Pollux,
Heru-Ra-Ha, Hymen,
Merti, Rehkt

ANIMAL:
Magpie, Parrot, Penguin, Zebra

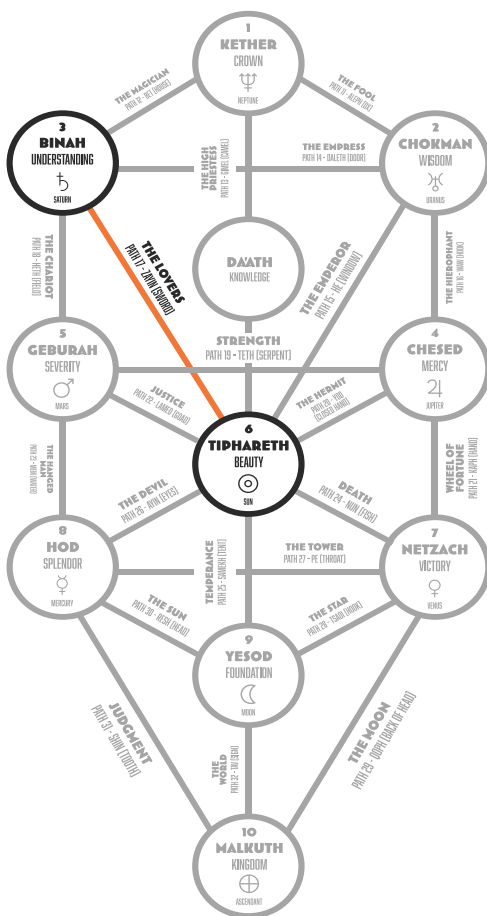
CRYSTAL:
Alexandrite, Aventurine,
Emerald, Iceland Spar, Jade,
Malachite, Pink Tourmaline,
Rose Quartz, Ruby

PLANT:
Apple, Dragon's Blood,
Hawthorn, Lavender,
Meadowsweet, Orchids, Parsley,
Rose, Rush, Violet

MAGICKAL ITEM:
Sword, Tripod

ARCHANGEL:
Zadkiel, Raphael

TAROTORIAL® EXPANDED



WHITE
Beginning, Humility,
Purity



YELLOW
Confidence, Joy,
Intellect, Optimism



PINK
Affection, Friendship,
Companionship



GREEN
Balance, Fertility,
Growth, Harmony

The depiction on the Lovers card usually portrays two individuals, often identified as Adam and Eve, basking in the warm glow of sunlight. This card symbolizes the essence of duality, representing the fusion of the masculine and feminine, the interplay between the conscious and unconscious mind, and the balance between the tangible and spiritual worlds. It encourages reflection on the harmonious union of such contrasting elements.

A guardian angel, commonly recognized as Archangel Raphael, hovers above the couple with his expansive wings, creating a protective aura around them and granting them blessings and guardianship. The background features a mountain, which represents both challenges and the peaks of desire. Next to one of the figures stands a fruit-bearing tree, which is a symbol of material desires and temptations. In contrast, a tree ablaze with fiery leaves or flames represents spiritual awakening and fervor, encompassing life's dualities.

While The Lovers card is often associated with deep romantic connections, it goes beyond that scope. It resonates with strong bonds, whether they be platonic, familial, or related to one's life pursuits. Similar to the story of Adam and Eve, the card intertwines a narrative of ethics and core beliefs. It may draw attention to moments of decision-making, where moral values are weighed against tempting allure.



ZODIAC: Gemini (May 21 – June 20) is an Air sign ruled by Mercury. The dual nature of Gemini embodies a mix of yin and yang, and Geminis often feel as though they have two distinct sides.



PLANET: Mercury is the smallest planet in our solar system and the closest to the Sun. Mercury, the messenger of the gods, represents communication and reasoning.



ELEMENT: Air represents logic, intellect, and communication. The intangible element is considered to be active, masculine energy. It is associated with Spring, the Suit of Wands, and the East cardinal direction.



HERMETIC QABALAH Associated Hebrew Letter: Zayin – Sword (Discernment, Cut Off)



TREE OF LIFE PATHWAY: 17th Path Between Binah (Understanding) and Tiphareth (Beauty)