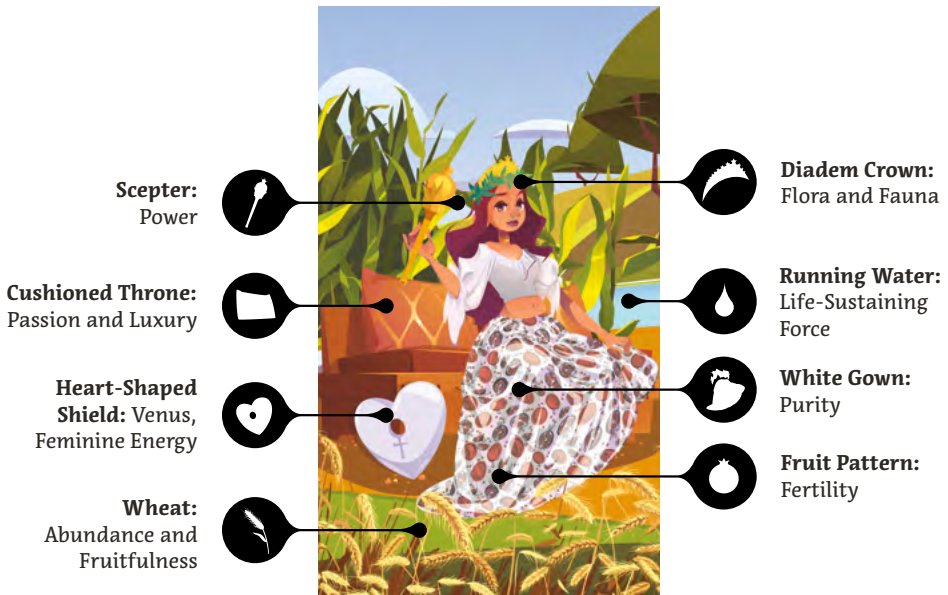


- 3 -

# THE EMPRESS

M A J O R   A R C A N A



**Yes/No Reading:**



*Yes*



*No*




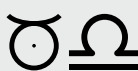



*Maybe*

**Names in Other Tarot Systems:**

Golden Dawn: The Empress

Tarot of Marseilles: L'Impératrice

Thoth: Empress

				
PLANET Venus	ZODIAC Taurus, Libra	ELEMENT Earth	HEBREW Daleth	COUNT Planetary Trump

### **Upright: Abundance, Nurture, Stability, Compassion, Creativity, Motherhood**

The Empress is a sensual and confident creature full of feminine, nurturing energy. They're a welcome sight in readings where questions regarding fertility, new projects, and finances are asked.

You may be experiencing new life in the form of romance, business, a new job, or a new project. Now is the time to accept creative impulses and bring your plans to fruition. The Empress could also be signaling a pregnancy, mainly if appearing in spreads alongside The Sun, The Ace of Cups, or the Page of Pentacles.

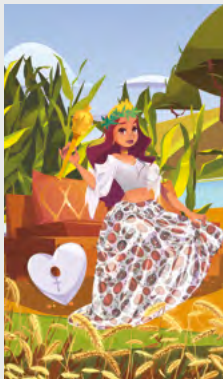
This card can suggest a period of comfort, luxury, or indulgence. It might be a call to treat oneself or to appreciate life's pleasures. There's a sense of balance and harmony associated with the Empress. Things align in your favor, and your life's a harmonious flow.

### **Reversed: Domestic Troubles, Stagnation, Neglect, Lack of Confidence**

There may be financial or domestic issues plaguing you, causing immeasurable stress. There may also be a creative block or a needy person drawing too much of your energy. Just as the upright Empress represents nurturing, in reverse, they can indicate excessive care to the point of smothering or being overly protective.

In questions about pregnancy or conception, a reversed Empress might suggest challenges or frustrations. This could be literal, as in difficulties with physical image, or symbolic, such as projects and plans not coming to fruition as hoped.

As a card of abundance, its reversal can suggest financial difficulties or feelings of material lack. There may also be a lack of care or neglect towards oneself or others. It could indicate a time when one is feeling unloved or uncared for.



### CHAKRA:

Throat, Heart, Sacral

### TIMING:

According to conditions

### NUMEROLOGY:

3, 12, 21

### ARCANA RELATION:

The Hanged Man, The World

### DEITY:

Aphrodite, Demeter, Hathor,  
Isis, Persephone, Venus

### ANIMAL:

Dove, Pelican, Sparrow, Sow

### CRYSTAL:

Emerald, Peridot, Pink  
Tourmaline, Rose Quartz,  
Turquoise

### PLANT:

Apple, Clover, Corn, Cypress,  
Dong Quai, Fig, Hazel, Myrtle,  
Olive, Peach, Pomegranate,  
Rose, Sunflower

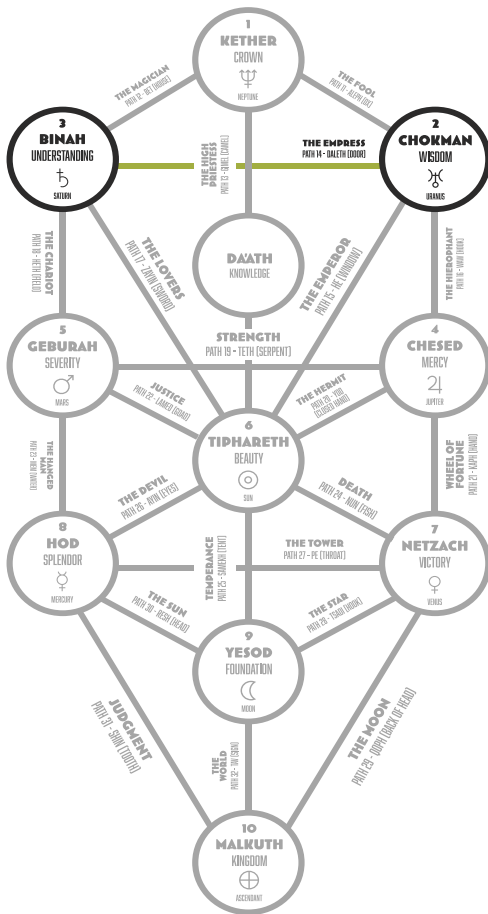
### MAGICKAL ITEM:

Cauldron

### ARCHANGEL:

Anael and Chamuel

## TAROTORIAL® EXPANDED



### WHITE

Beginning,  
Humility, Purity



### YELLOW

Confidence, Joy,  
Intellect, Optimism



### RED

Desire, Passion,  
Power, Vitality



### GREEN

Balance, Fertility,  
Growth, Harmony

The Empress is commonly depicted as sitting on a throne surrounded by a fertile landscape, symbolizing their deep connection with the Earth and the life it sustains. Their crown of twelve stars represents their rule over the zodiac and the passing of time. A.E. Waite likened The Empress to the Blessed Virgin Mary, describing them as a *Refugium Peccatorum*. This powerful force of nature embodies nurturing, fertility, and growth.

In the original artwork, The Empress is depicted as pregnant, sitting comfortably on a luxurious throne surrounded by a lush grain field. Their flowing white gown features pomegranate imagery, and they wear a crown with twelve stars. Holding a gold scepter in their right hand and resting their left on their knee, they stand upon a heart-shaped shield featuring the symbol of Venus.

The Empress card signifies a period of growth, abundance, and fertility. It also suggests that the querent is in a nurturing phase, whether of themselves or others. This card encourages embracing one's feminine side, savoring life's luxuries, and admiring the beauty surrounding us in all its forms.



**ZODIAC:** Taurus (April 20 – May 20) is an Earth sign, and Libra (September 23 – October 22) is an Air sign, both are ruled by Venus. The luxurious energy of Venus bonds with Taureans, while the relationship qualities of the planet align with Libras harmonious nature.



**PLANET:** Venus primarily governs love, harmony, and affection in relationships. It rules over our sentiments, what we value in romantic partnerships, and how we express affection.



**ELEMENT:** Earth represents death and rebirth. It is the realm of abundance, prosperity, and wealth. It is associated with Autumn, the Suit of Pentacles, and the North cardinal direction.



**HERMETIC QABALAH** Associated Hebrew Letter: Dalet – Door (Pathway, Nourishment)



**TREE OF LIFE PATHWAY:** 14th Path Between Chokmah (Wisdom) and Binah (Understanding)